

# ADOBE® LIVECYCLE® CONTENT SERVICES ES

Share, manage, and retain content



## With LiveCycle Content Services ES, you can:

- Comply with regulations through comprehensive change management control and detailed audit trails
- Increase productivity using hierarchical content categorization and powerful search capabilities
- Accelerate process cycle times by incorporating collaboration capabilities in your processes and applications
- Empower business users to dynamically change content assets without involving IT developers
- Boost end-user productivity through Microsoft Office plug-ins and shared folder access to the content repository

With a fully integrated set of content services, ranging from an enterprise content repository to social collaboration tools such as enterprise forums, Adobe LiveCycle Content Services ES helps you build content-rich applications rapidly with a low total cost of ownership.

## Manage content through enterprise library services

LiveCycle Content Services ES drives productive collaboration as part of your overarching business processes. By versioning content and using check-in/checkout capabilities, you can ensure the work of one person is not overwritten by others, all while keeping a complete audit history of all actions taken, helping address compliance issues.

## Deliver content-rich processes

By incorporating LiveCycle Content Services ES with Adobe LiveCycle Process Management ES, you can implement end-to-end processes that interact extensively with content. Whether knowledge workers need to collaborate on content creation as part of specific process activities, or whether they need processes to be initiated or resumed based on newly published or updated content, your designers can easily orchestrate such processes using prebuilt services for content interaction.

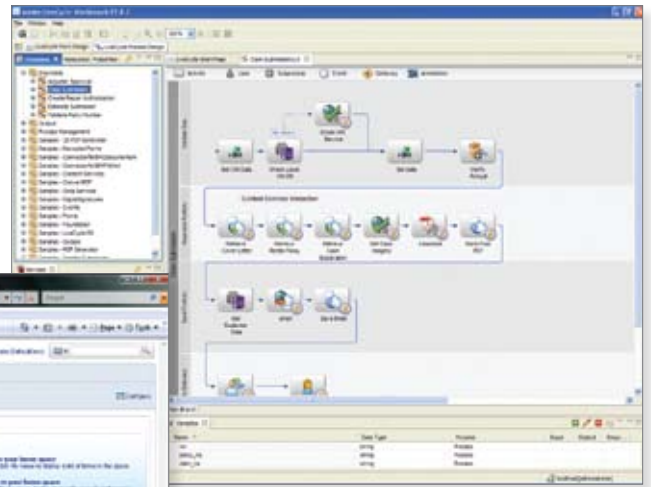
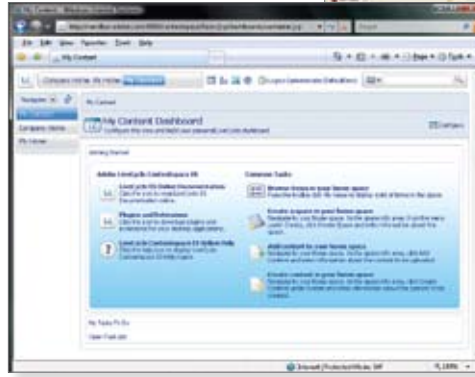
## Archive content according to your retention policies

You can easily control the archiving of your content, such as submitted forms or converted PDF files, in your business processes and applications with complete conformance to your established retention policies. When used in combination with Adobe LiveCycle PDF Generator ES or Adobe LiveCycle Output ES, content can also be converted into PDF/A before it is archived.

## Automate transformation of content into Adobe PDF

By incorporating LiveCycle Content Services ES with LiveCycle PDF Generator ES, you can automatically convert content into PDF. For example, you can configure a content space so that as content matching specific criteria is updated or added to the repository, the content is instantly converted into PDF. Content can also undergo more complex transformations, such as automatically assembling a set of documents within a shared space into a PDF file, adding watermarks to it, and then archiving it.

Below: Interact with content through a variety of ways, including a rich web-based interface.



Above: Orchestrate processes that interact with content through a graphical process design tool.

#### For more information

For more details about Adobe LiveCycle ES software, visit [www.adobe.com/products/livecycle/](http://www.adobe.com/products/livecycle/).

To download a free trial version, visit [www.adobe.com/devnet/livecycle/trial](http://www.adobe.com/devnet/livecycle/trial).

For complete system requirements, visit [www.adobe.com/products/livecycle/systemreqs.html](http://www.adobe.com/products/livecycle/systemreqs.html).

#### Apply rights management based on access permissions

Using LiveCycle Content Services ES, you can specify access controls at the assigned user, group, and role level—with single sign-on support through NTLM or LDAP. For advanced security features, deploy Adobe LiveCycle Rights Management ES in concert with LiveCycle Content Services ES. This combination allows you to leverage the same access control permissions assigned to content stored within the repository and have them transparently applied to documents as they are taken out of the repository and moved throughout the organization. Also, applying rights management to documents enables you to dynamically change policies for access control, revocation, revision control, and audit trails—even after copies of documents have been extracted from the repository.

#### Classify content and rapidly locate critical business data

LiveCycle Content Services ES allows you to categorize all content with custom hierarchical classifications, and then perform powerful parameterized searches using a combination of classifications, word-based matching, and additional content metadata—such as content type, author, date, and location—to rapidly find critical business information.

#### Collaborate with team members as part of your processes

LiveCycle Content Services ES provides team collaboration capabilities, such as forums and discussions, that enhance applications and the underlying business processes.

You can automate the creation of forums within process activities such as creating a forum for evaluating candidates as part of a hiring process. You can also create ad-hoc forums to handle exceptions and accelerate decision making.

#### Access content through Microsoft Office and shared folders

In addition to offering users a web interface to access and manage content, LiveCycle Content Services ES provides Microsoft Office plug-ins that enable business users to interact with the content repository using Microsoft Word and Excel. Network folders are also provided as another interface for content spaces in the content repository, giving users the option to manage their content transparently through simple drag and drop operations.



**Adobe Systems Incorporated**  
345 Park Avenue  
San Jose, CA 95110-2704  
USA  
[www.adobe.com](http://www.adobe.com)

Adobe, the Adobe logo, and LiveCycle are either registered trademarks or trademarks of Adobe Systems Incorporated in the United States and/or other countries. All other trademarks are the property of their respective owners.

© 2009 Adobe Systems Incorporated. All rights reserved. Printed in the USA.  
95011953 1/09